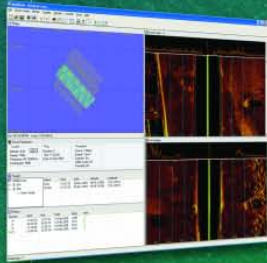


The CM2 Sidescan Sonar System

High definition .. Versatile .. Easy to use .. Robust



MaxView full-featured acquisition software. Project-based software used with the Sonar Transceiver.



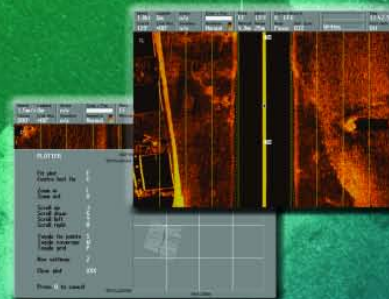
Rugged CM2 Sonar Transceiver (STR) and PC running MaxView acquisition software. The STR's USB interface needs no extra hardware. Simple optional connection to third party software.



Digital CM2 Towfish. Dual frequency 325/102kHz, dual frequency 780/325kHz or single frequency options. All stainless steel construction.



CM2 C-Case all-in-one unit, waterproof to IP65 when operating. Runs MaxPro acquisition software. Ideal for open boat use and exposed conditions.



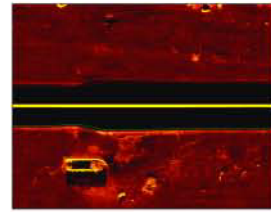
MaxPro software has an intuitive user interface. Features include target positioning and a coverage plotter.



www.cmaxsonar.com

High Definition Images

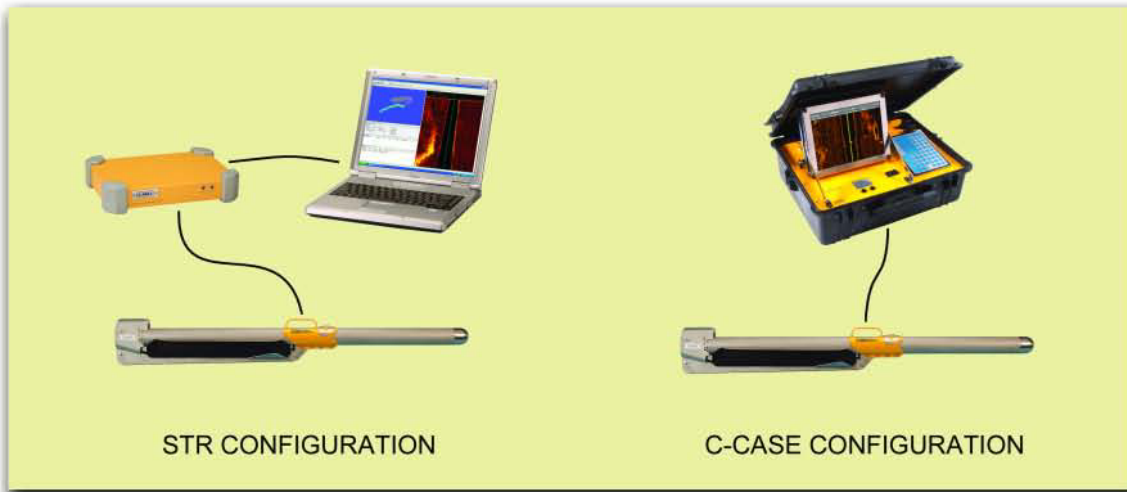
- new ultra-low noise towfish electronics
- digital towfish and 2-wire cable telemetry; no crosstalk or loss of quality
- lateral resolution of 39mm (780kHz); 78mm (325kHz); 156mm (100kHz)
- range out to 500m (100kHz); 150m (325kHz); 25m (780kHz)
- enhanced immunity to unwanted surface reflections



WINCH OPTIONS INCLUDE
THE SK172 PORTABLE UNIT

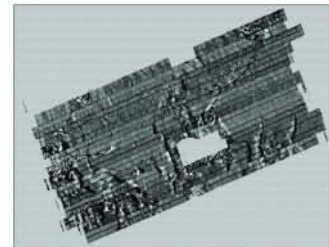
Versatile

- choice of dual frequency 325/100kHz, dual frequency 780/325kHz or single frequency towfish
- wide range of cable and winch options
- optional sensor interfaces including magnetometer
- optional ROV and AUV versions
- towfish can be inverted for scanning ship's hulls
- choice of STR or C-Case configurations



Easy to Use

- intuitive, full-featured MaxView and MaxPro acquisition software
- licence-free MaxView Reader software allows replay, format conversion, editing etc. on any PC
- all main MaxPro display and towfish functions are controlled by a single keypress on the splashproof keypad
- automatic towfish gain control and altitude measurement
- transducer beam depression switched in seconds, without tools
- towfish handle and slim outline allows easy launch and recovery
- clear, concise, easily understood handbook



EASY EXPORT TO MOSAICING TOOLS



DOUBLE O-RING SEALED
RATED TO 2500M

Robust

- towfish constructed of stainless steel; no aluminium
- safety mechanism to save the towfish if it strikes an obstruction
- rugged surface electronics, with all stainless steel case (STR) or polypropylene clamshell case (C-Case)
- 3 year warranty on towfish, STR and C-Case

A full specification can be downloaded from our website: www.cmaxsonar.com



C-MAX Ltd, Unit B1, Roman Hill Business Park, Broadmayne, Dorchester DT2 8LY, U.K.
Tel +44 1305 853005 Fax +44 1305 852136 email: sales@cmaxsonar.com